

KGT-LE-1325

Ricoh Gen5 Series

The slim body design suits customer with limited work space perfectly. It keeps a big print area of 1.3m x 2.5m while occupying the minimum space in the work area.



Vacuum system



Ricoh G5 print head



Negative pressure ink supply system

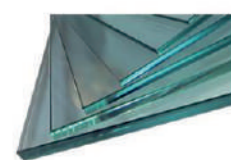


German ColorGATE RIP

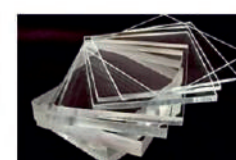


Bi-direction printing

Applications



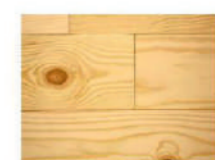
Glass



Acrylic



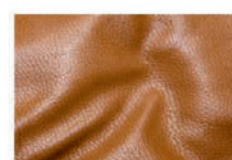
Ceramic



Wood



Metal



Leather



Phone case



Plastic



Technical Specification

MODEL		KGT-1325			
Printhead		3~4 Printheads (Ricoh Gen5)			
Printing Technology		Piezoelectric inkjet, variable dot printing, grayscale technology			
X&Y Motor		Industrial high quality servo motors x 3			
Printing Resolution		720x900 DPI / 720x1200 DPI			
Printing Direction		Uni and Bi-direction			
Media	Maximum Print Size	1300mm(Width)x2500mm(Length)			
	Table Size	1350mm(Width)x2550mm(Length)			
	Max.Thickness	70mm			
	Weight	50kgs/m ²			
Ink Type		UV LED curable inks			
Ink Configuratoin		CMYK+WW(Standard), CMYKLcLm+WW			
Ink Cartridge Size		1500ml			
Ink Supply System		Negative Pressure System (NPS) with Automatic Ink Supply			
Curing System		Daul UV LED lamps, water cooling system			
Image Process Software		ColorGate(Bundle Version)			
File Format		Tiff,Jpeg,Postscript,EPS,PDF,DCS2.0			
Interface		USB2.0			
Printer Dimesions(X*Y*Z)		3165x2200x1172mm			
Wooden Box Dimensions(X*Y*Z)		4530x2130x1600mm			
Net Weight		650kgs			
Printing Speed (Bi-direction, Single color, Feathering:122)					
Printheads	Resolution	Pass	High speed	Middle speed	Low speed
3 Ricoh Printheads	720x900 dpi	6 Pass	13 Sqm/h	12 Sqm/h	10 Sqm/h
	720x1200 dpi	8 Pass	12 Sqm/h	10 Sqm/h	9 Sqm/h
Operating Conditions					
Temperature			25°C		
Relative Humidity			55%		
Electricity Request					
Power			5500W(including vacuum system 3000W)		
Power requirements			Input voltage:220-240V,single-phase,50/60Hz		
Warranty			One year limited warranty(Please contact your local dealer for accurate data)		

BeoJet

beojet@gmail.com
www.beojet.rs

Vikentija Rakića 13
11080 Beograd

Kontakt:
062 489 899